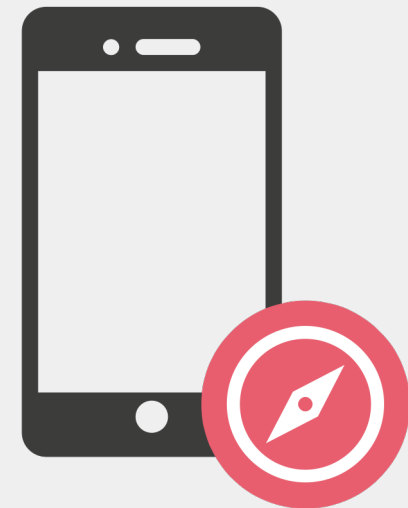


Architecture Overview

COMPASS NUM-APP

14.04.2021



Objectives

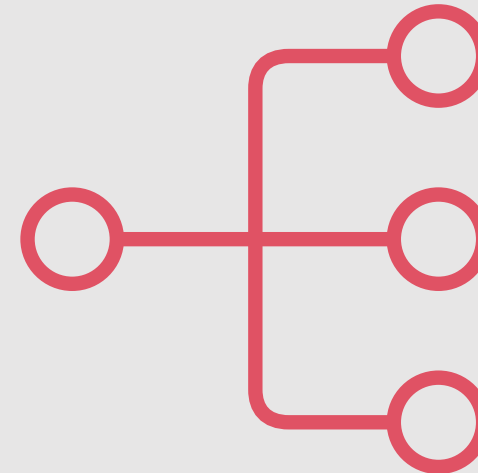
After this session, you should be able to:

- Understand how the NUM-App components interact
- Understand which use cases are covered
- Explain where deployment units should be placed



Agenda

- Component Overview
- Component Interactions
- Logical Operational Model
- Outlook on Platform Contributor Track
- Q&A



Component Overview

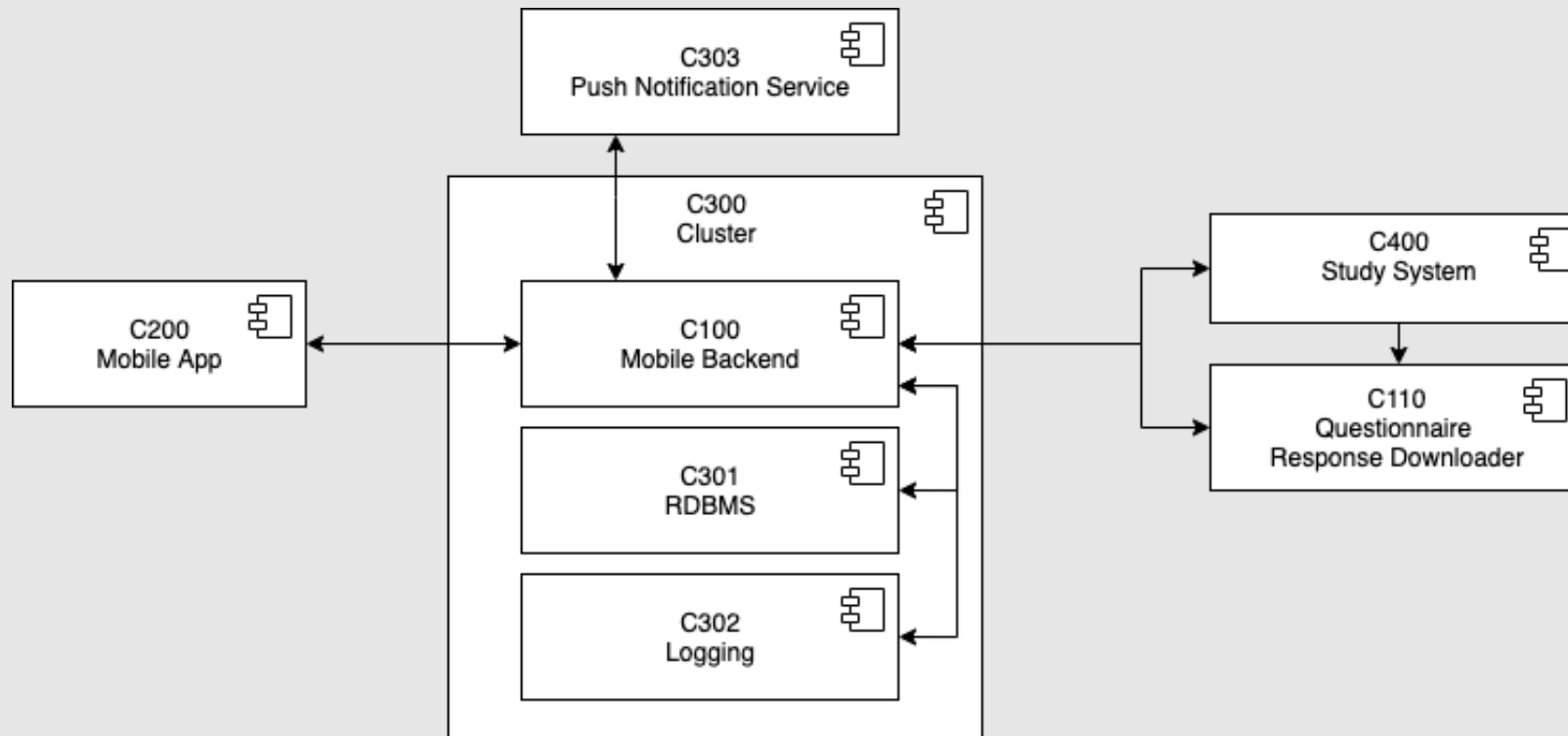
Component Overview

C1xx - Backend Components

C2xx - Frontend Components

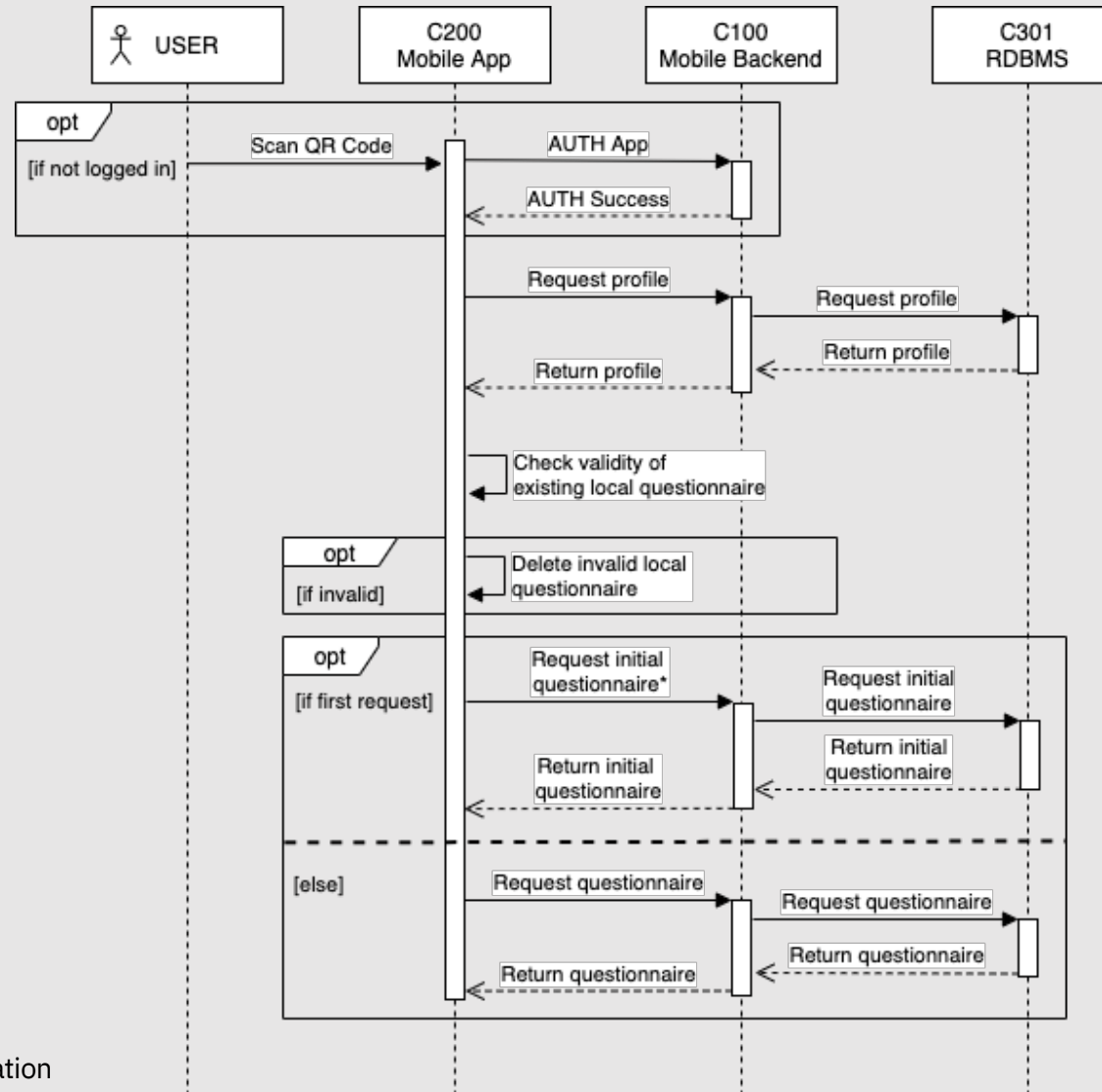
C3xx - Technical Components (Middleware)

C4xx - University Hospital Specific Components

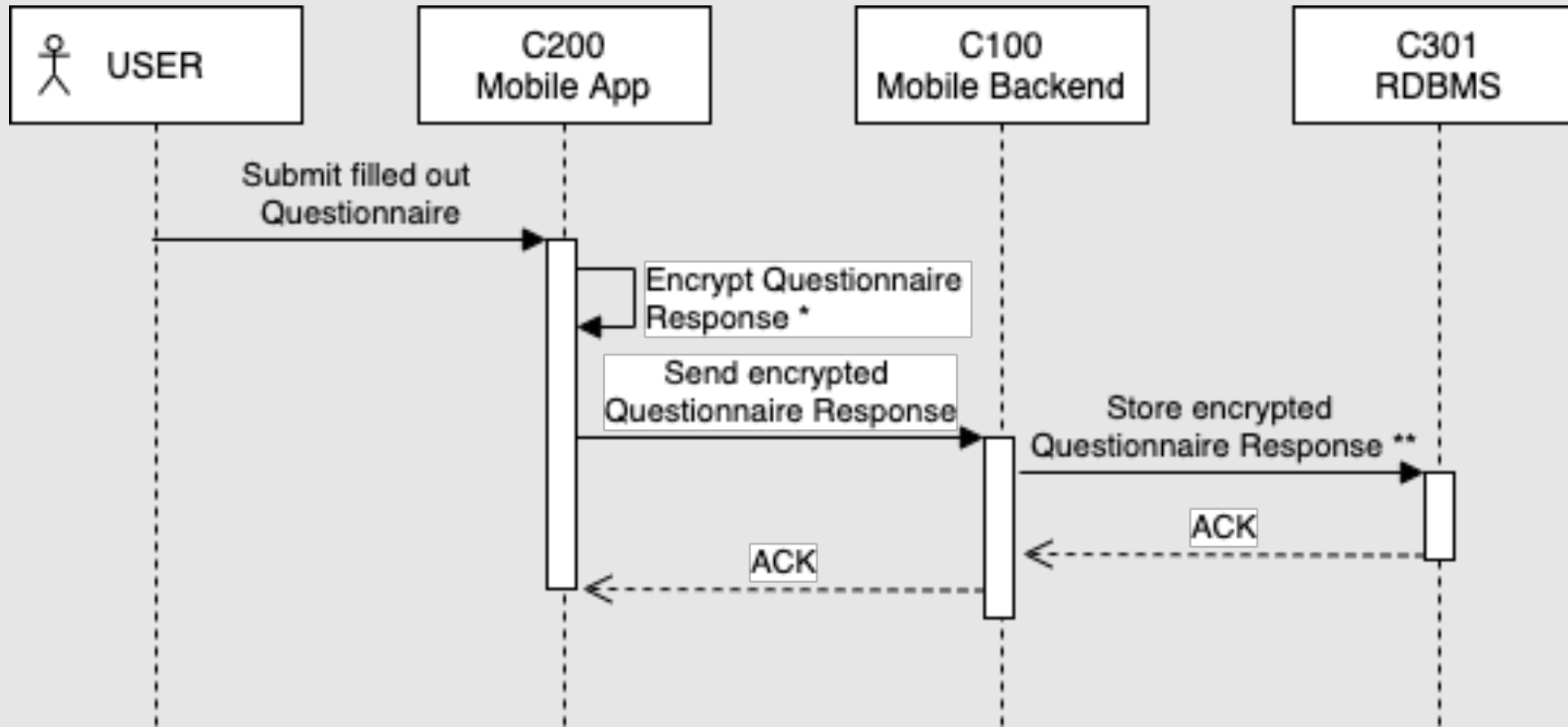


Component Interactions

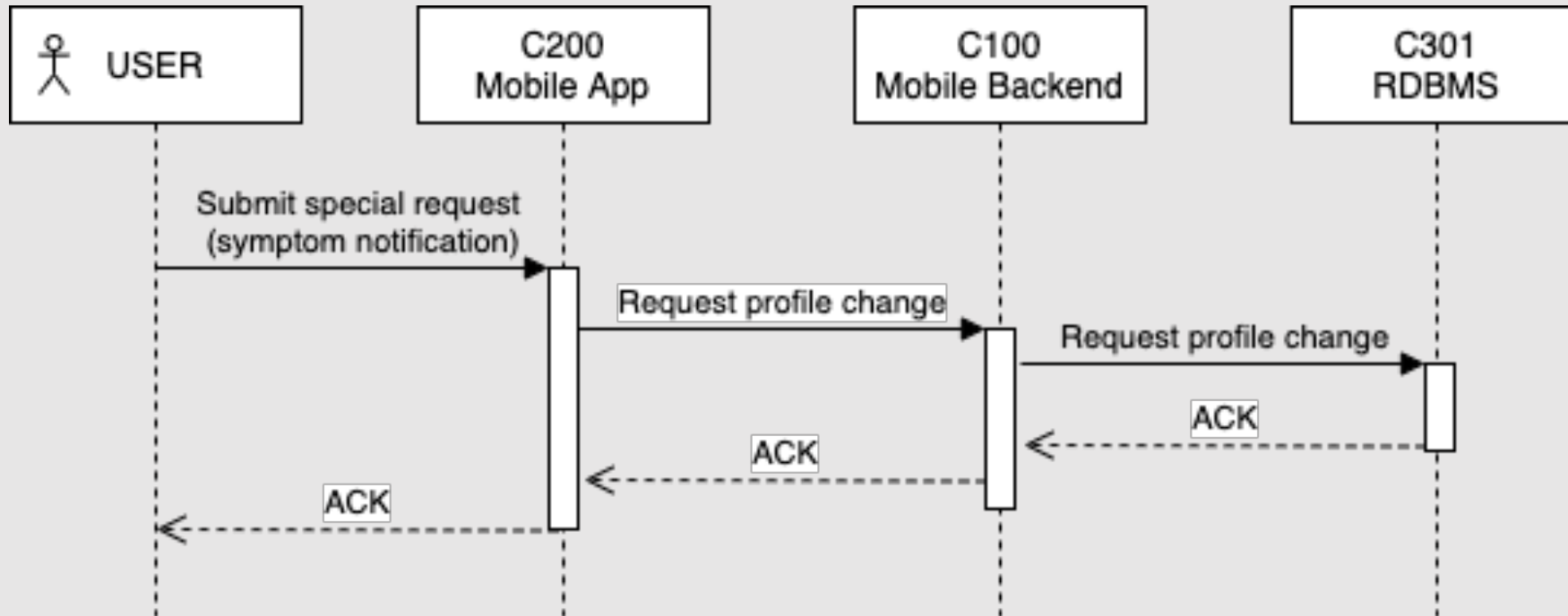
UC1 – Load Questionnaire



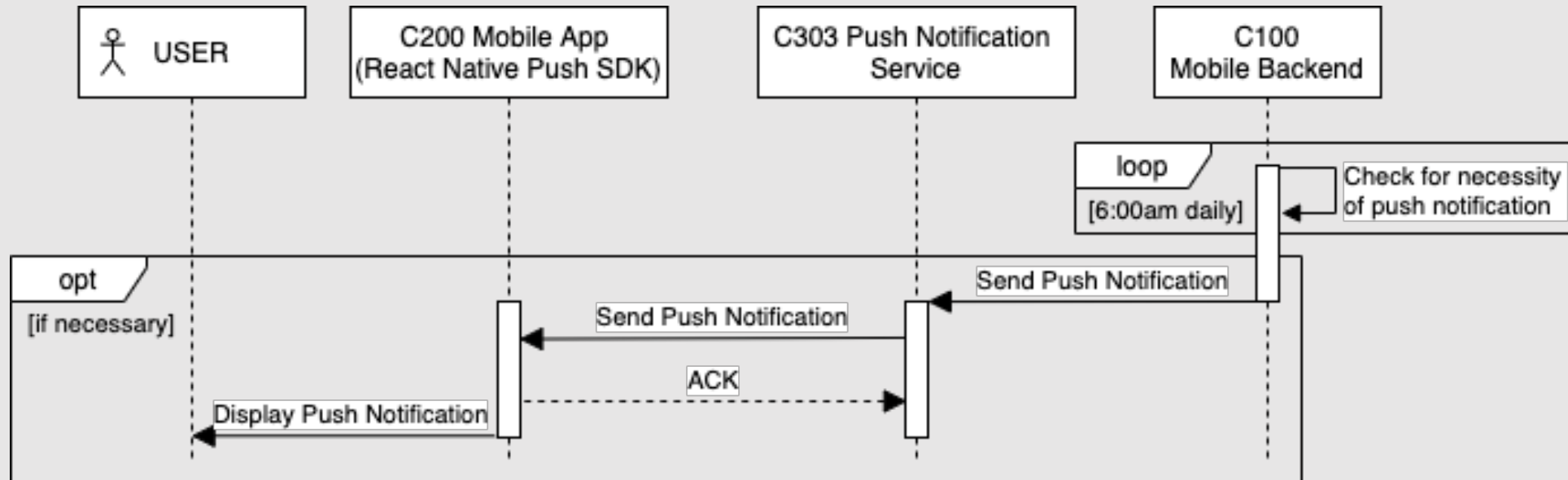
UC2 – Submit Questionnaire



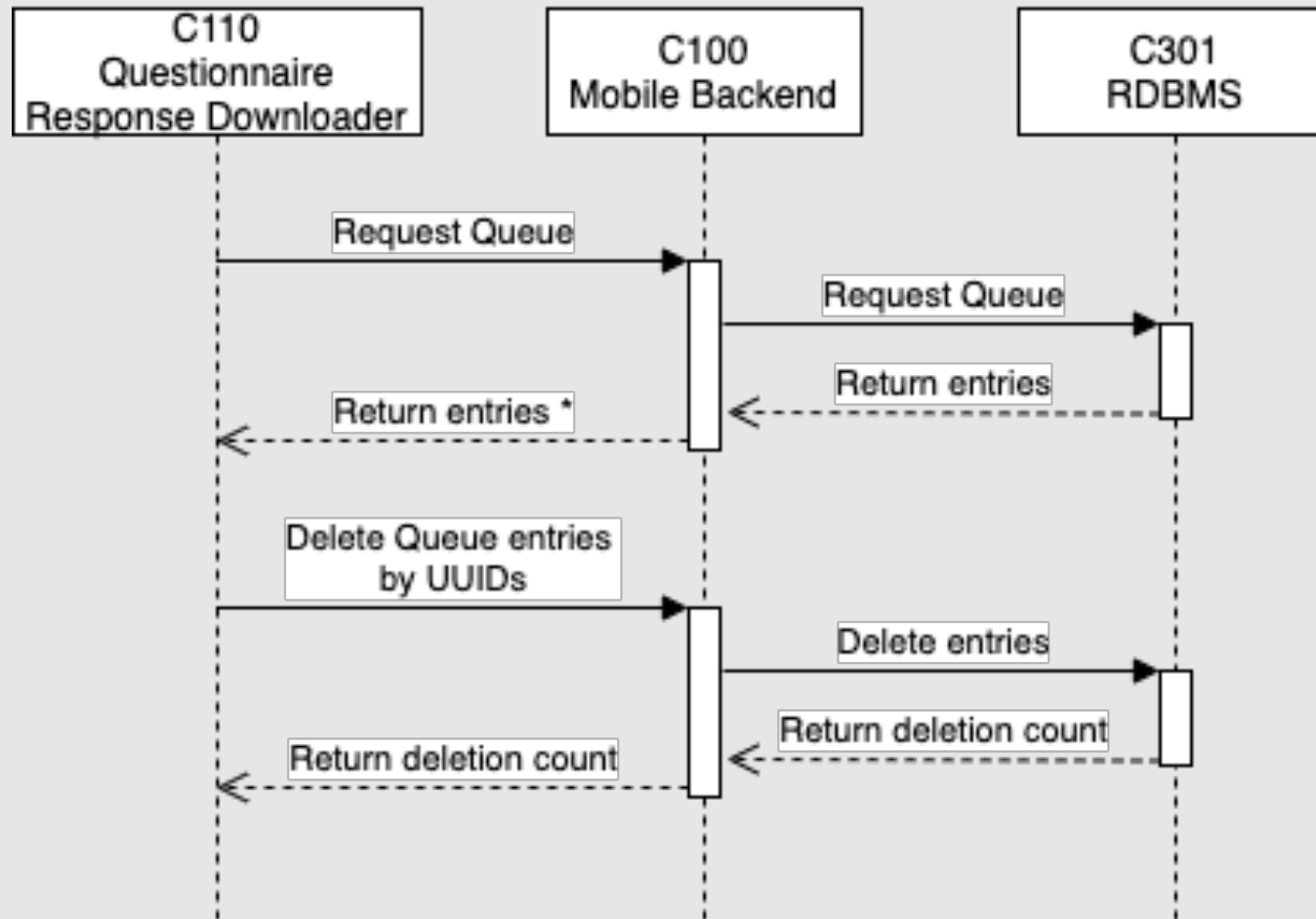
UC3 – Send Special Report



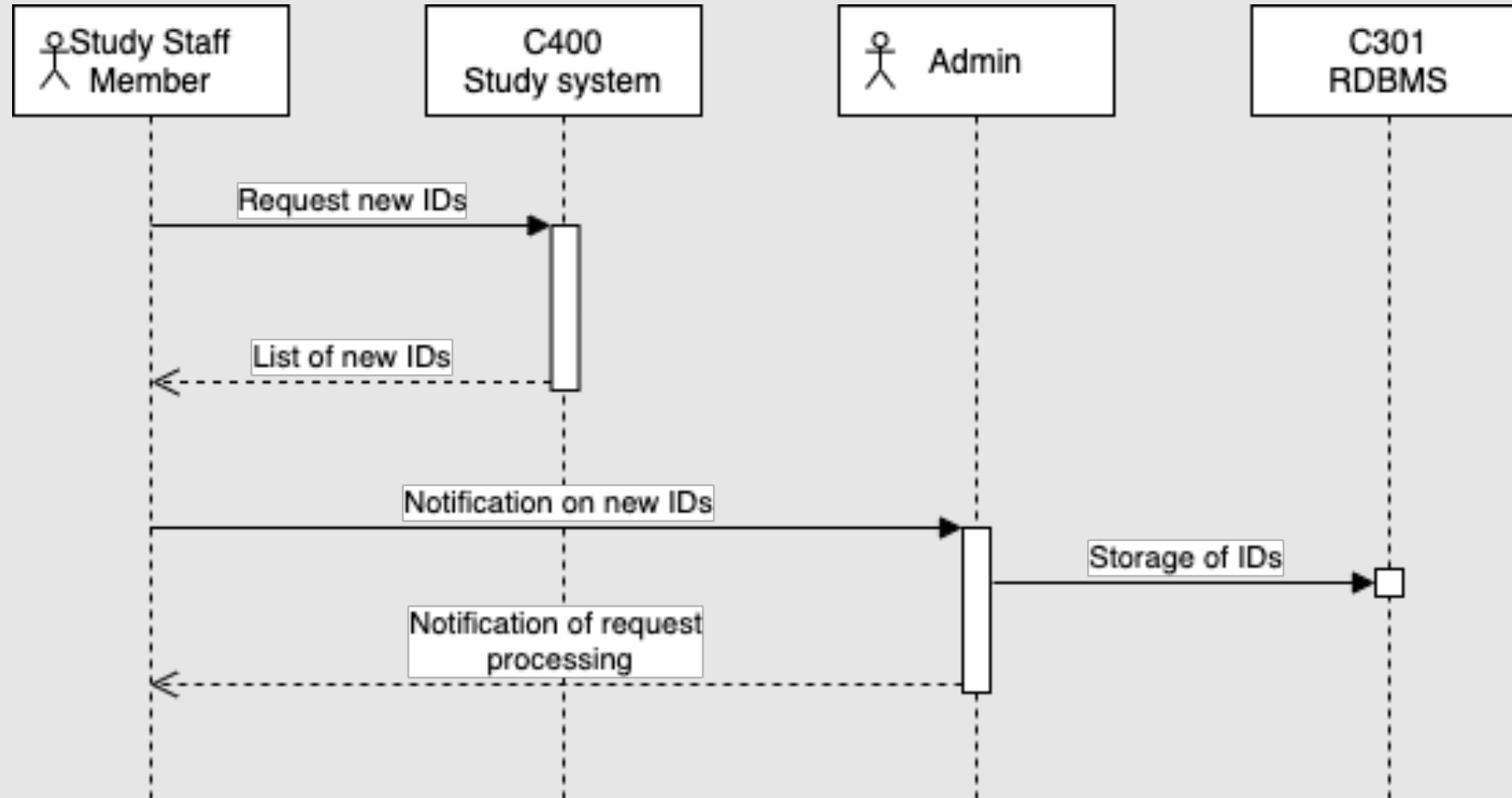
UC4 – Send Push Notification



UC5 – Retrieve Questionnaire Response

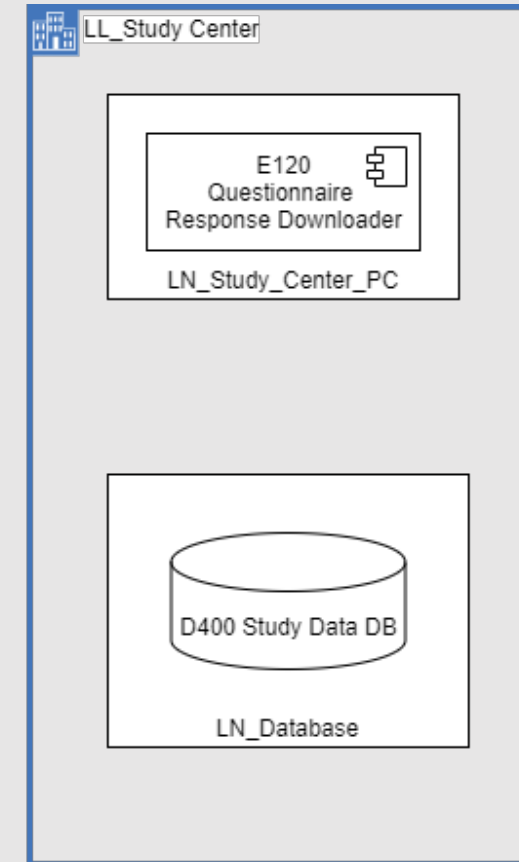
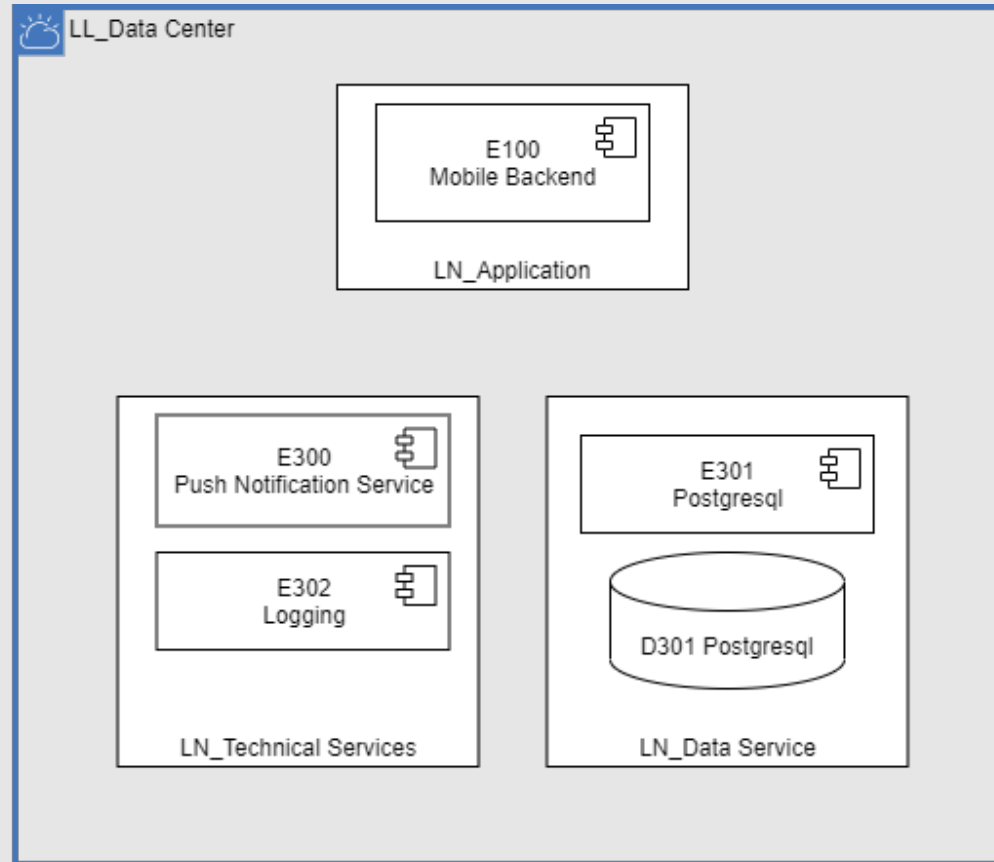
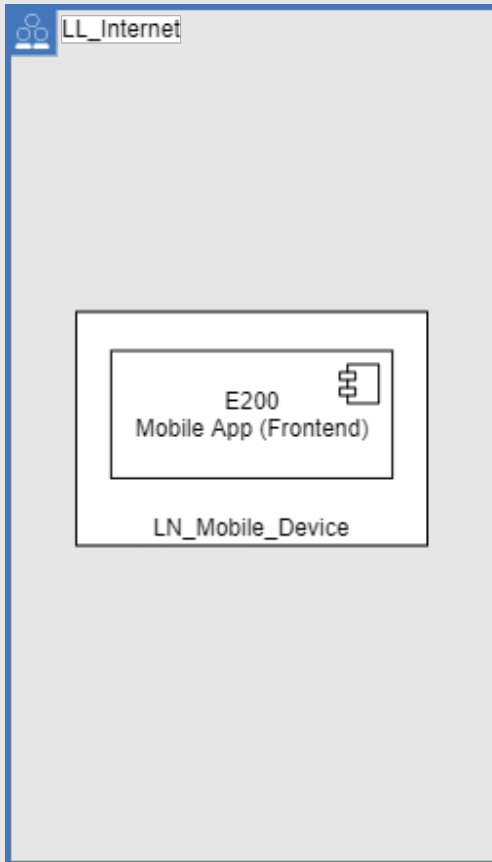


UC6 – Store Study Participant IDs



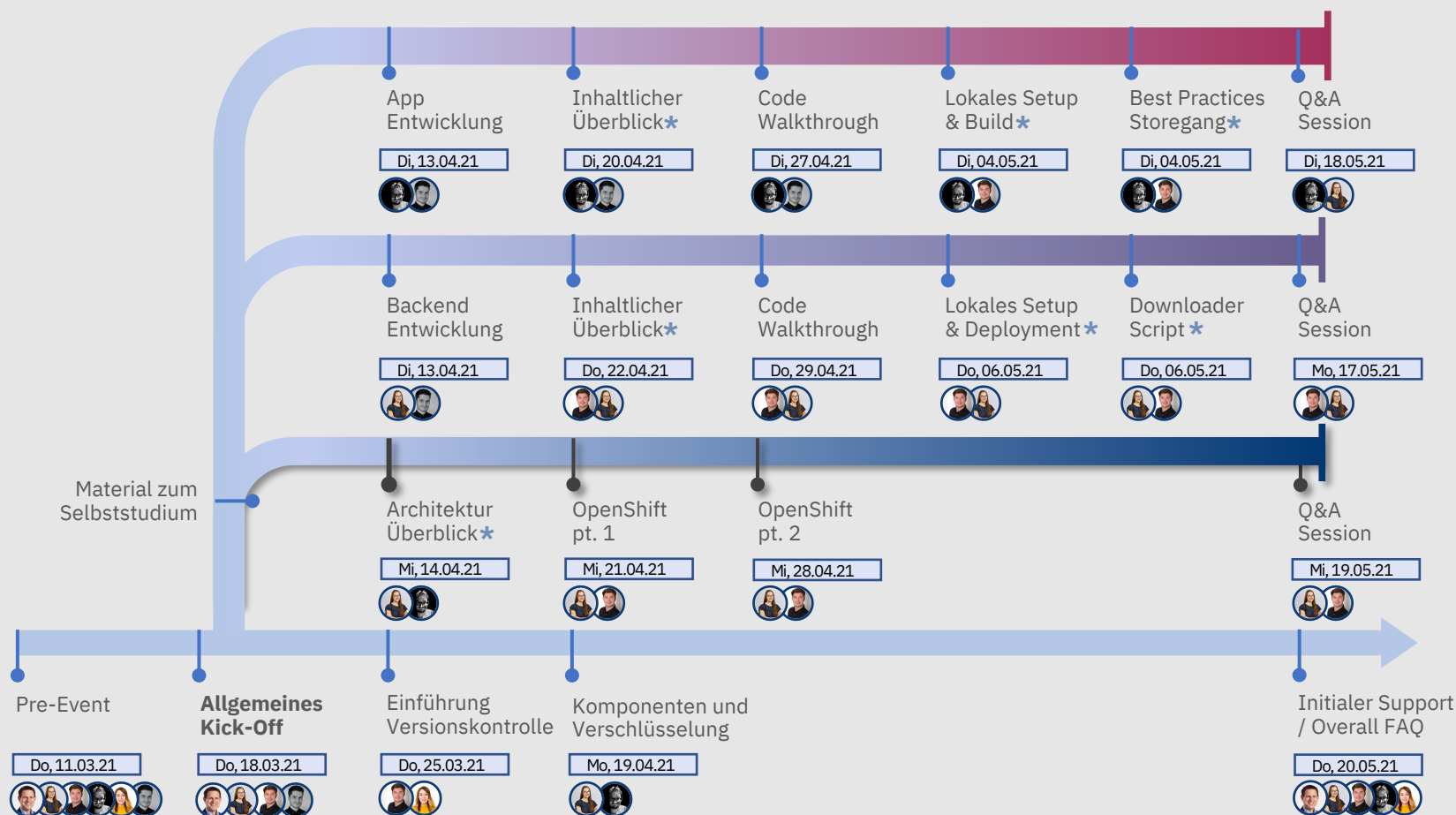
Logical Operational Model

Logical Operational Model



Outlook on Platform Contributor Track

Plattform Contributor Track





Links

Links

Architecture documentation

- <https://github.com/NUMde/compass-numapp/tree/main/docs/architecture>



Q&A

Q&A

*What questions
do you have?*

